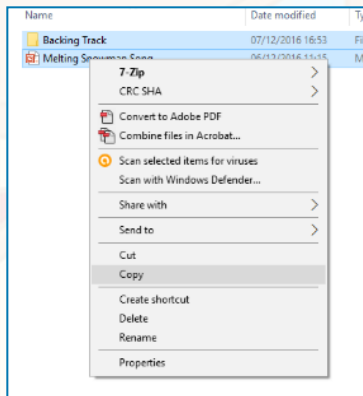
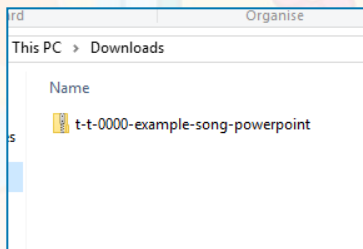
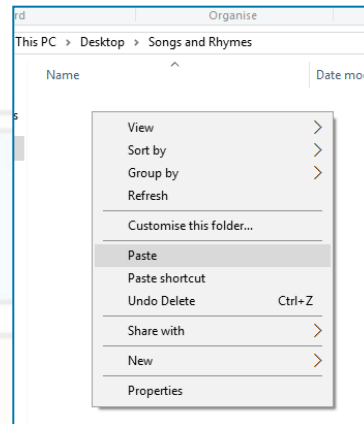


Guidance for Video/Audio in PowerPoints

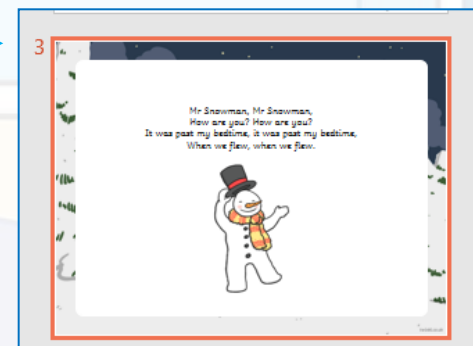
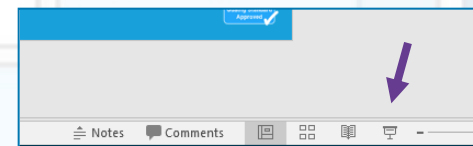
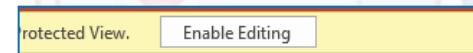
1. Open the folder and copy all the files.



2. Paste the copied files into a new folder.



3. Open the PowerPoint file, enable editing and enter presentation mode (start the slide show).



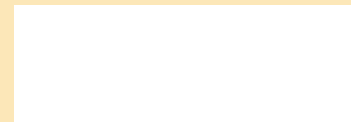
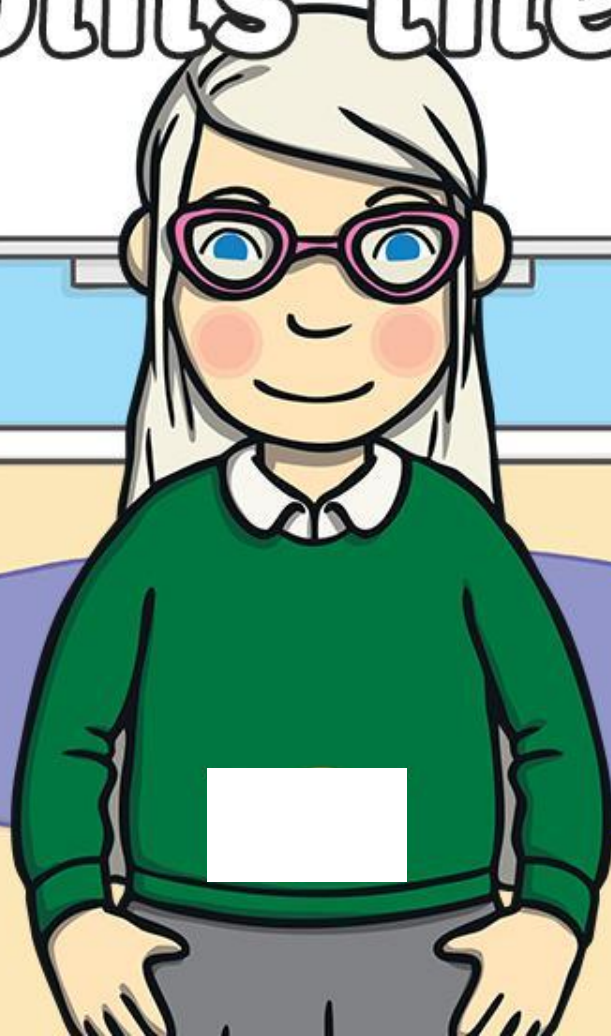
Please note the embedded audio may not be compatible with early versions of PowerPoint.

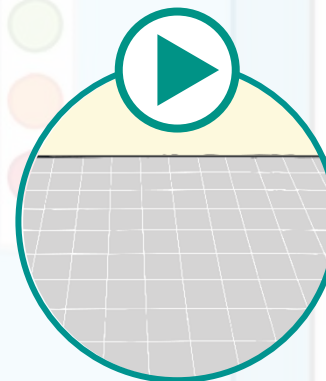
You may wish to delete this slide before beginning the presentation.



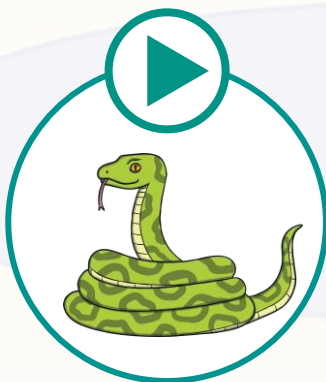
ge and dge saying /j/

Lily Joins the Class






I'll say them and you write them down!



We are going to learn to spell some new Common Exception Words.



You will need paper and coloured pencils or pens or whiteboards for this part of the lesson.



Click me for Kit's teaching tips!

Time to practise by writing the word.

bought

Click here to
start timer.

Check



Time to practise by writing the word.

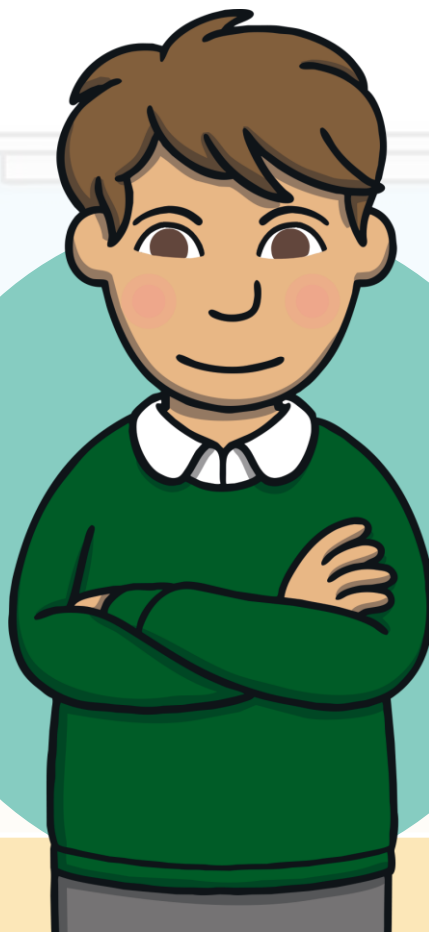
favourite

Click here to
start timer.

Check

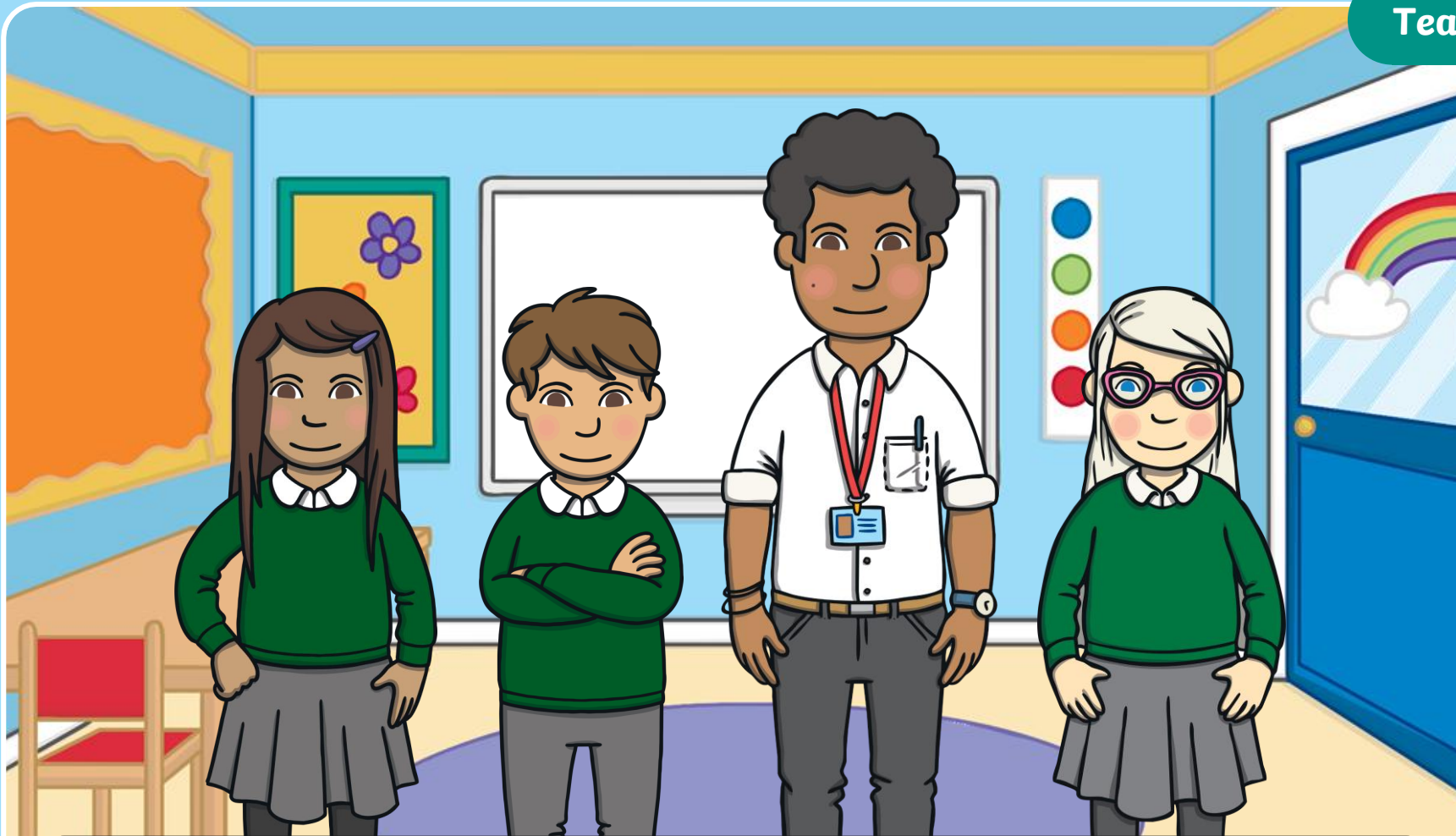


Today, we are learning to read words containing **ge**
and **dge** saying /j/.





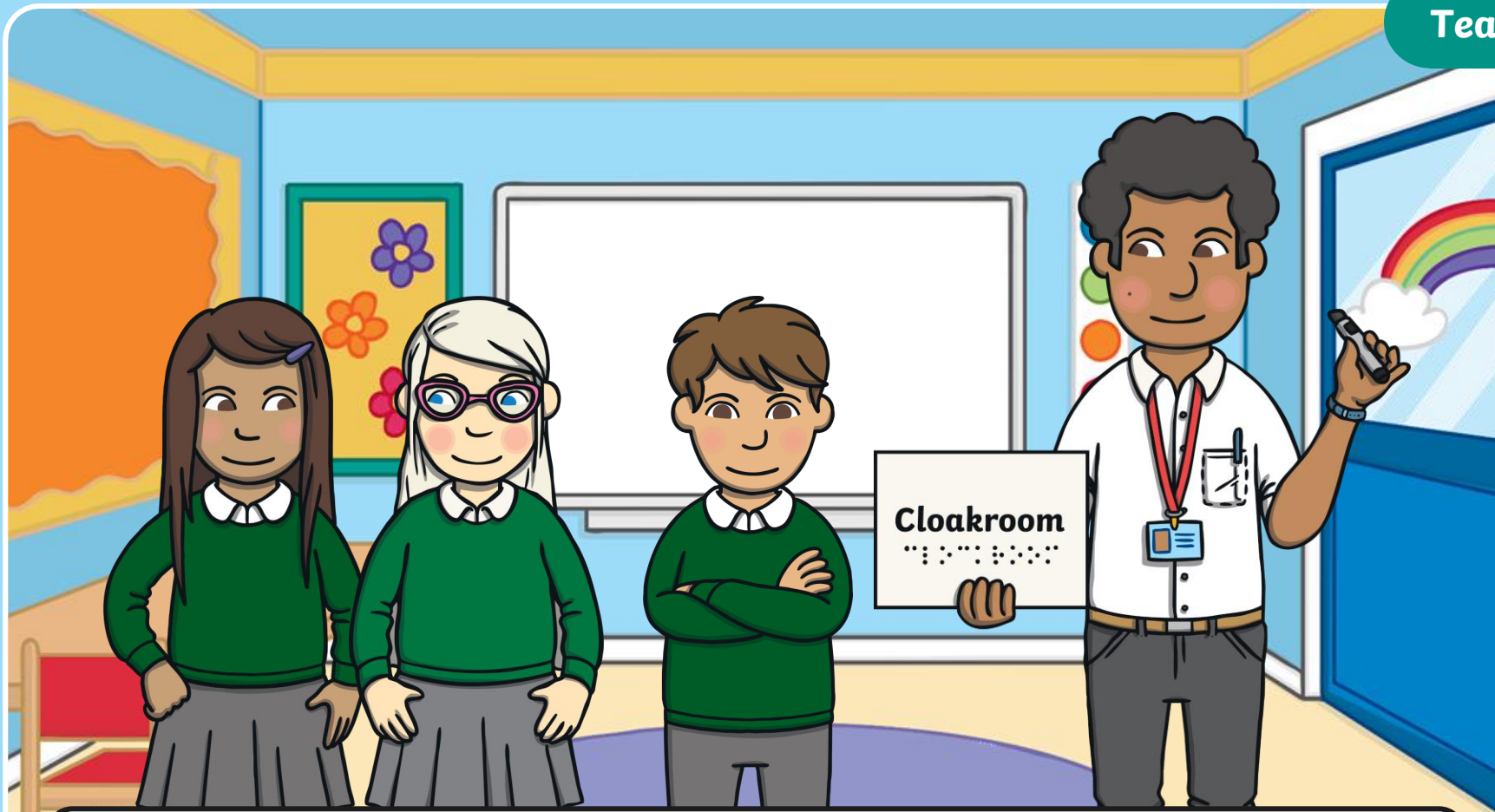
Kit and Sam were back to school after the summer holidays and were now in Mr Philips' class. They liked Mr Philips – he made learning fun.



Mr Philips had brought a new girl into the class with him. She had beautiful long white hair and pink glasses. "This is Lily," said Mr Philips.



The children gathered around to welcome Lily. “Your glasses are cool!” said Sam.
“Thanks,” said Lily, “I’m visually impaired so they really help me to see better.”



“You’ll notice a few little changes in our classroom this year,” said Mr Philips, “like braille on our signs. I’ll also be using this dark pen on the whiteboard.”
“OK!” said the children.

Mr Philips is writing words with his black pen on the whiteboard.



edge



hedge



badge



bridge



dodge



nudge



What do you notice about the words?

All of these words contain 'dge' saying /j/.
Let's practise reading these words.

edge

hedge

badge

bridge

Model sound talking the
word, showing that the
'dge' makes one sound.

nudge



Click me for Kit's teaching tips!



Mr Philips writes some more words on the whiteboard.

A whiteboard with a grey frame. On the board, six words are written in black marker: 'large', 'orange', 'challenge', 'hinge', 'charge', and 'forge'. Each word has a small grey marker icon above it, as if it was just written. The words are arranged in two columns: 'large' and 'orange' in the top row, 'challenge' and 'hinge' in the middle row, and 'charge' and 'forge' in the bottom row.

large

orange

challenge

hinge

charge

forge



Kit says these words have the same grapheme in.
Do you agree? Why? Why not?

All of these words contain another new grapheme.
It is 'ge' saying /j/'. Let's practise reading these words.

large

orange

challenge

hinge

Model sound talking the
word, showing that the 'ge'
makes one sound.

forge




Click me for Kit's teaching tips!



ge and dge Match-Up

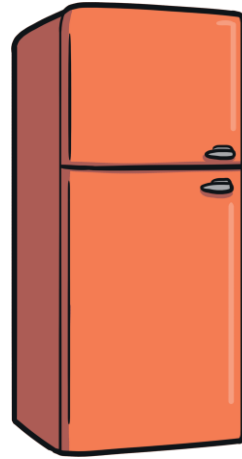
Mr Philips gives the children some word and picture cards to match up. Do you think the children have matched them correctly? Stand up straight if you think 'yes' or make a star shape with your arms and legs if you think 'no'.

 You could get active today and play the Stepping Stones PAPH Game instead of the Practise activity on the PowerPoint.

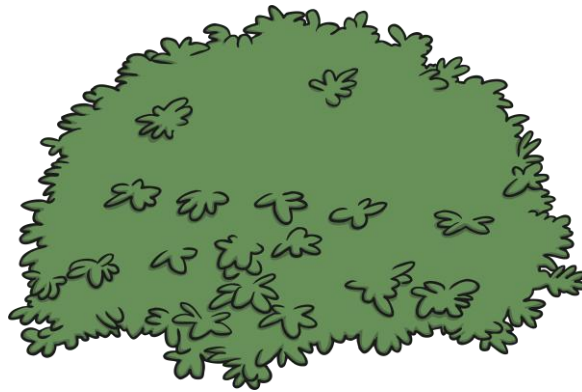


[Click us for Physically Active Phonics tips!](#)





hedge



Check





badge

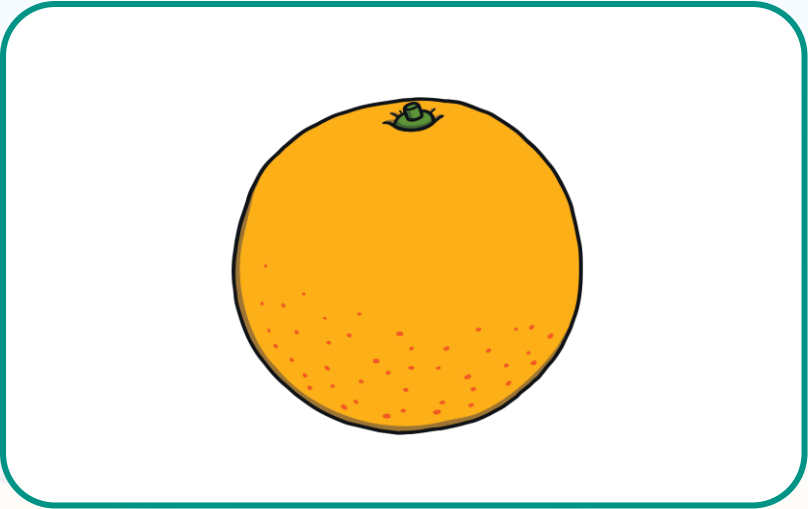
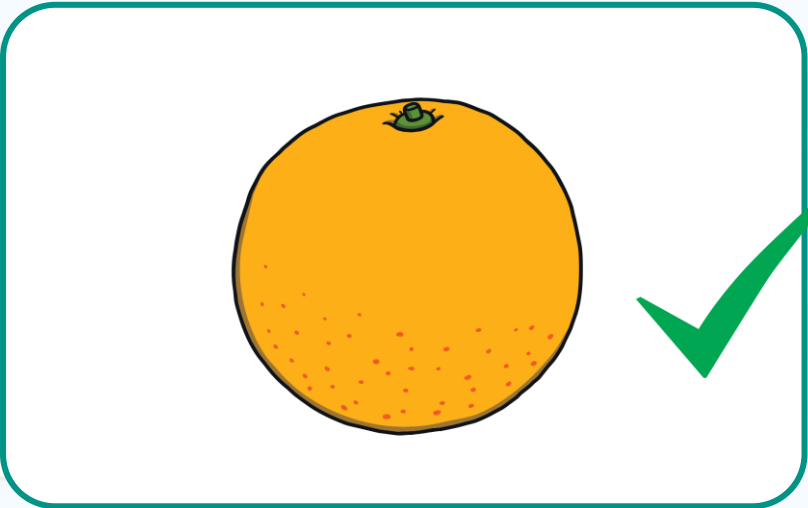


Check





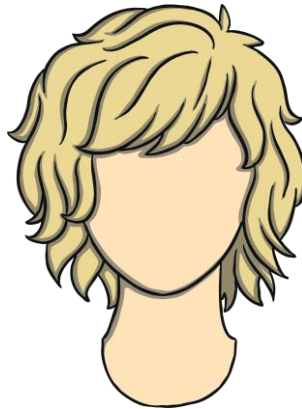
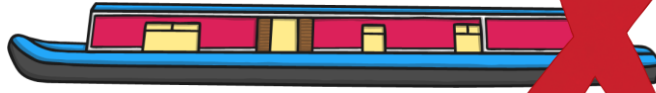
orange



Check

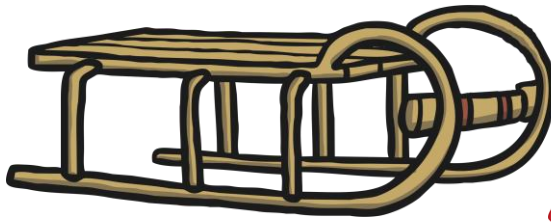


fringe

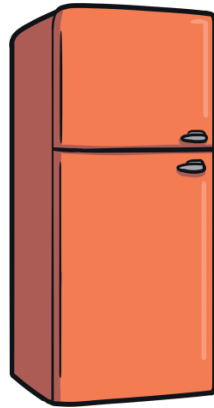


Check





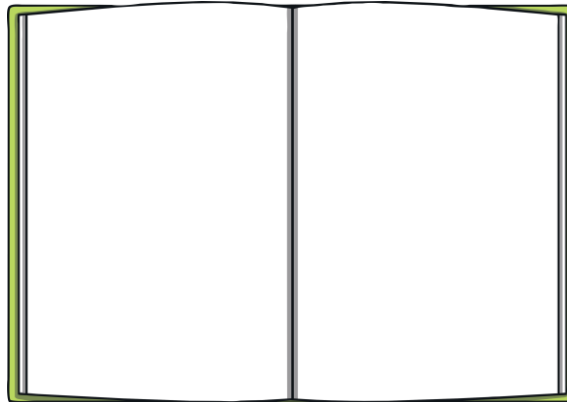
fridge



Check



change

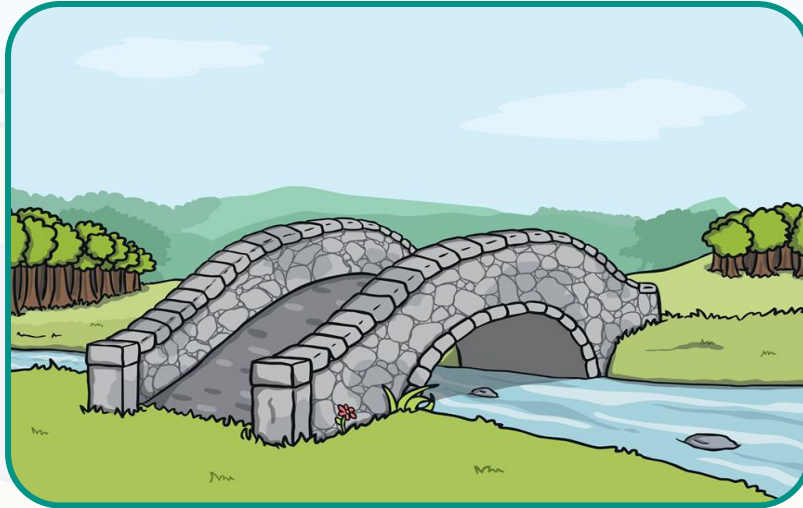
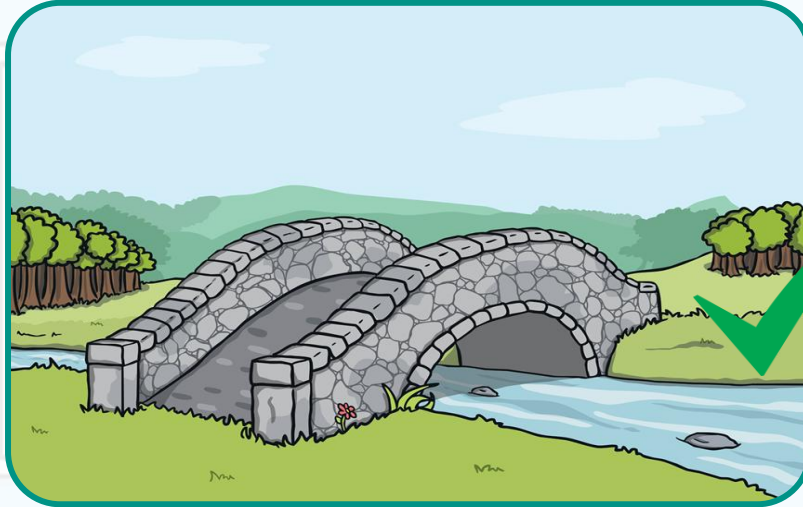


Check





bridge

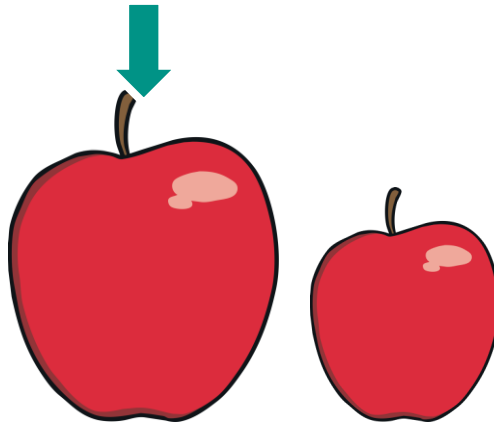


Check



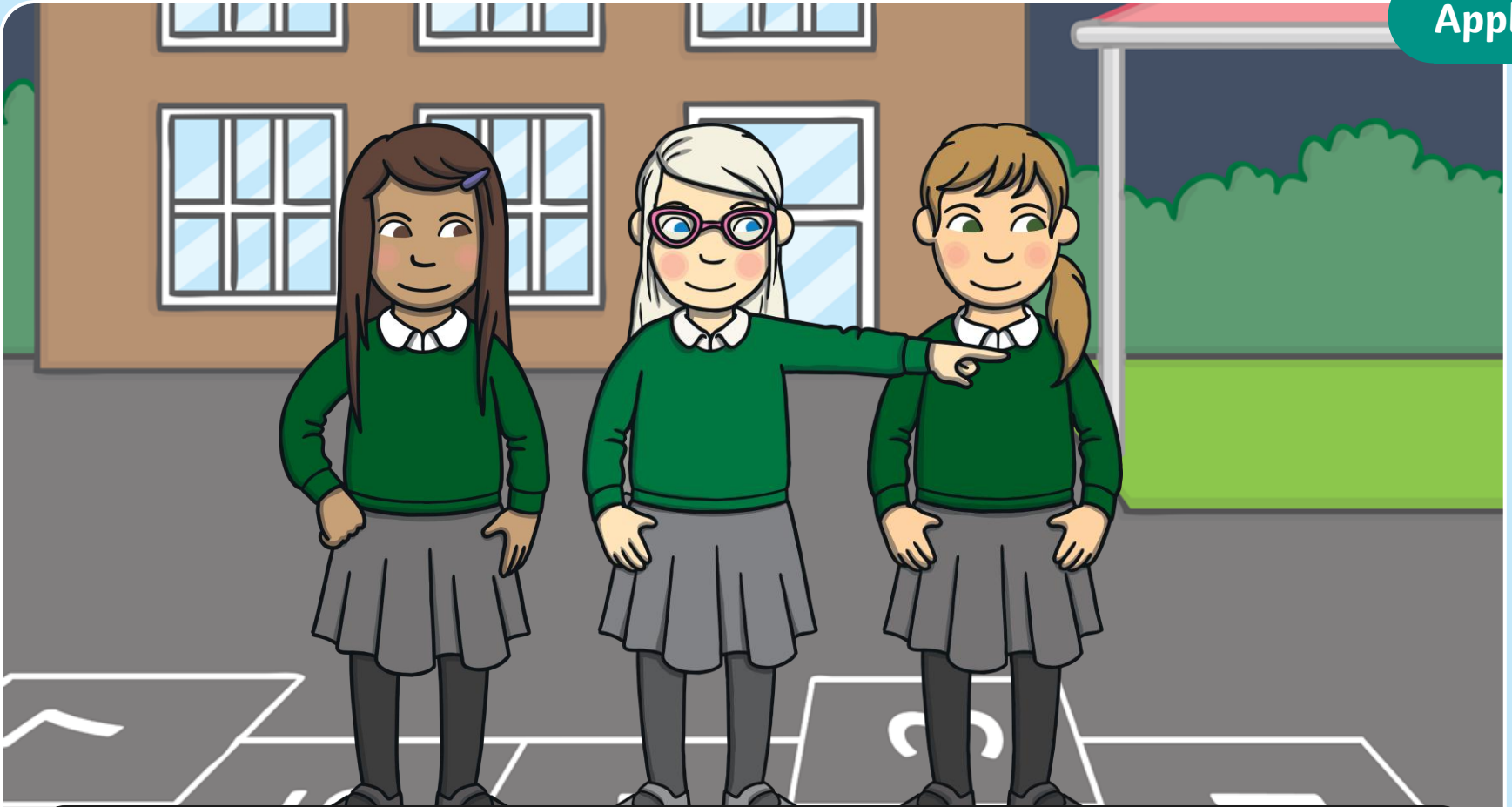


large

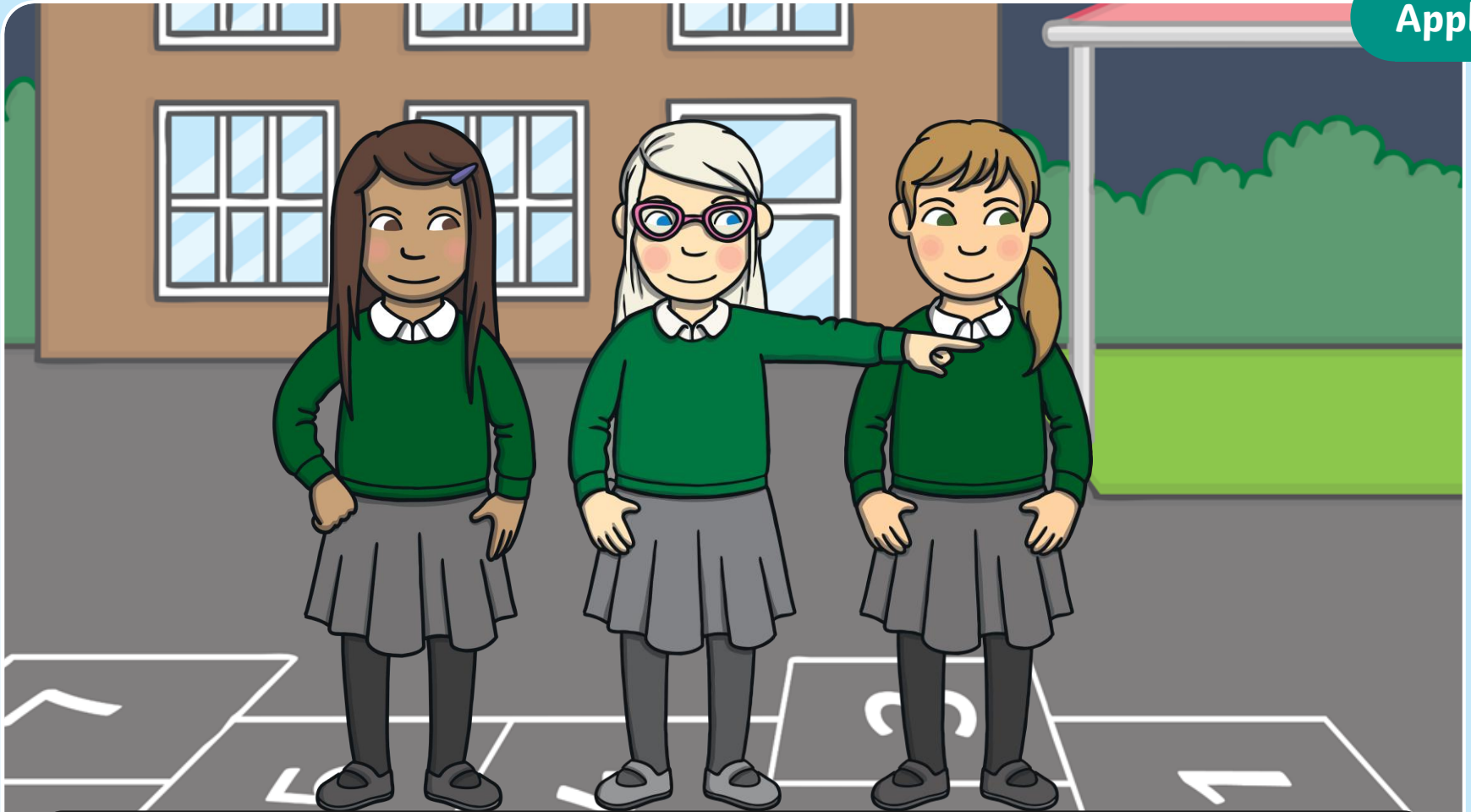


Check





“At playtime, Sam and Gabi chatted to Lily. They liked her a lot. “Have you always been visually impaired?” asked Gabi. “Yes,” said Lily, “so it is quite a big challenge for me to start a new school.”



But I have lots of things to help me settle into a new school," continued Lily, "like this braille sign! Shall we read it together?" "Yes, sure!" said Sam and Gabi."

Text Detectives

Read the words on the sign and spot any **ge** and **dge** saying /j/ words.



Oakwell Primary School Rules

oakwell primary school rules

Monitors must wear **badges**.

monitors must wear badges

Do not eat **fudge**.

do not eat fudge

Have healthy snacks like **oranges**.

have healthy snacks like oranges

Change for PE quietly.

change for pe quietly

Challenge yourself to do your best.

challenge yourself to do your best

Do not to **barge** and **charge** in the **large** playground.

do not to barge and charge in the large playground

Check





“Wow, Lily, you have a superpower!” said Gabi, impressed.
“Girls...” said Sam, thinking, “I know somewhere we could go and have real superpowers but we’ll have to wait until after school...”

Today, we have learnt...

ge and dge

saying /j/

The adventure
continues next lesson!



